

Avision

A vision of your office

Avision | AD240 Sheeffed Scanner

New Generation of High-Speed Scanning Solution



Dust Cover Design



**Fast,
60 ppm/120 ipm
scanning speed**



MiBox
Optional



Features:

- Fast, 60ppm / 120ipm scanning in color, grayscale and monochrome (200dpi)
- Fast, 40ppm / 80ipm scanning in color, grayscale and monochrome (300dpi)
- Max. document width up to 9.5 in. / 242mm (continuous form paper)
- Daily duty cycle up to 6,000 sheets
- Robust 80-page automatic document feeder
- Hard and embossed card scanning up to 1.25 mm in thickness in portrait or landscape feeding
- Press and scan to cloud servers via the bundled software Button Manager V2
- Earth-friendly LED technology
- Long page scanning mode up to 118"
- Auto power off setting

Overview

The AD240 is a 60 page-per-minute, duplex scanner that is fast, reliable, and affordable for business where scanning plastic ID cards, business cards, documents or other heavy card stock is necessary. With advanced paper feeding technologies, the AD240 balances fast speed with exceptional reliability across a wide variety of scanning situations.

Support document width up to 9.5 in. (242 mm)

The AD240 boasts a unique and innovative design in comparison with its predecessors - the ability to accommodate document width up to 9.5 in. (242mm). The extended document width from standard 8.5 to 9.4 in. makes the AD240 more competitive to fit for a wider range of documents (like continuous form paper).

A Duplex Scanner Suited for Document and Cards

Thanks to the advanced straight paper path and image processing technology, mixed batches of documents with varies sizes and weights can be scanned, appropriately cropped, deskewed, and ready to use. Scan size accepts paper from receipts (2 x 2 in.) to business document (9.5 x 14 in.). The auto document feeder is also robust enough to feed paper up to 400 g/m² (110 lb.) and embossed hard cards such as ID cards, credit cards, driver's license, and health insurance card up to 1.25 mm in thickness.

Powerful Bundled Software Applications

The AD240 come with TWAIN and ISIS drivers, and are bundled with a suite of powerful software applications that include Avison Button Manager, AVScan X, and Nuance PaperPort SE 14.

Avison's Button Manager V2 -Completes your scan with a single step



The Button Manager V2 main screen

Button Manager V2 makes it easy for you to scan and send your image to your favorite destinations with a press one button. Now the new version comes with an innovative feature to let you scan and automatically upload the scanned document to popular cloud repositories such as Google Docs, Microsoft SharePoint, or FTP. In addition, the iScan feature allows you to insert the scanned image or recognized text after optional OCR (Optical Character Recognition) process to your text editor such as Microsoft Word to get your job done easily and quickly.

Avision | AD240 Sheetfed Scanner

AVScan X

-The Intelligent Document Management Tool



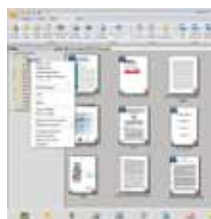
The AVScan X main screen

Document Imaging is the very first step of Document Management. However, poor quality images can cause serious problems to later indexing or storing processes. It may increase scanning labour costs and lowers the OCR accuracy. AVScan X ensures all documents are checked and polished at the time they are scanned such that the image quality is guaranteed before they are ready to use for other purposes.

AVScan X is an intelligent scanning and electronic filing solution. AVScan X possesses distinct features that convert and index scanned information into electronic documents for easy storage and fast retrieval.

Nuance PaperPort SE14

- The Professional Choice to Organize and Share Your Documents



The PaperPort SE14 main screen

PaperPort SE 14 is Nuance's most popular scanning and document management solution, carefully designed specifically for home office use. Part traditional file cabinet, part digital-document desktop, PaperPort SE 14 is the fastest and easiest way to scan, share, search, and organize your documents. Additionally, PaperPort SE 14 now delivers anytime-anywhere access to your most important files however it's convenient for you – using a PC, Mac, iPhone, iPad, or Android device.

MiBox Scan APP



MiBox APP main screen

By connecting the scanner to Avison's newly designed MiBox, the scanner can be upgraded into a wired or wireless scanner to let other computers or smartphones/tablets to scan and receive image data directly from the scanner in the LAN.

MiBox Application

To let your mobile devices instruct to scan and receive the scanned image, you need to install the mobile app – MiBox to your smart phones or tablets. The MiBox application can be purchased for free from an application store such as Google Play.

Simply press the [Start scan] button, the scanner begins scanning the document and the thumbnail image will be displayed.



Avison AD240 Product Specifications

| | |
|-------------------------------|---|
| Paper Feeding: | ADF 80-page capacity |
| Scanning Technology: | Color Charged-Coupled Device (CCD) |
| ID card thickness: | Up to 1.25 mm |
| Scan Size: | Max. 216 x 356 mm (8.5 x 14 in.) Min. 50 x 50 mm (1.9 x 1.9 in.) |
| Scanning Speed: | 60 PPM / 120 IPM (Color, A4, 200 dpi) 40 PPM / 80 IPM (Color, A4, 300 dpi) |
| Paper Thickness: | 27~413 g/m ² (7~110 lb.) |
| Long Page Mode: | 299.7cm (118 in.) |
| Optical Resolution: | 600 dpi |
| Output Resolution: | 75, 100, 150, 200, 300, 400 and 600 dpi |
| Output Formats: | B/W, greyscale, 24-bit color |
| Bundled Software: | Avison Button Manager V2 Avison AVScan X Nuance PaperPort SE 14 |
| Interface/Drivers | USB 2.0 / TWAIN , ISIS |
| Power Supply: | Input: 100-240 VAC, 50/60 Hz Output: 24V, 2.0A |
| Power Consumption: | <26 W |
| Environmental Factors: | Operating temperature: 10°C to 35°C (50°F to 95°F) Operating humidity: 10% to 85% |
| Acoustical Noise: | Standby: <45 dB Operating: <50 dB |
| Dimensions | Max.: 316 x 680 x 239 mm (12.4 x 26.8 x 9.4 in.) Min.: 316 x 191 x 168 mm (12.4 x 7.5 x 6.6 in.) |
| Weight: | 4 kg (8.8 lb.) |
| Recommended Daily Duty Cycle: | 6,000 sheets |
| Multi-feed Detection: | Ultrasonic |

Windows, Windows XP, Windows Vista, Windows 7 and Windows 8 are either registered trademarks or trademarks of Microsoft Corporation in the United States and/or other countries. PaperPort is a trademark or registered trademark of Nuance Communications, Inc. or its affiliates in the United States and/or other countries. Other brands and product names herein are trademarks or registered trademarks of their respective holders.

System Requirements

| | |
|----------------------------|--|
| CPU: | Intel® Core 2 Duo or higher |
| Memory: | 2GB (32bit Windows) 4GB (64bit Windows) |
| DVD-ROM: | DVD ROM Drive |
| USB: | USB2.0 Port (USB 1.1 supported) |
| Windows® Operating System: | Windows® XP SP3, Vista, 7, 8.x (32 & 64 bit) |

Contents

| |
|-------------------------------------|
| AD240 Scanner |
| Power Supply |
| Quick Guide |
| USB 2.0 Cable |
| CD-ROM includes: |
| -Scanner Driver (TWAIN/ISIS Driver) |
| -Avison Button Manager V2 |
| -Avison AVScan X |
| -Nuance PaperPort SE 14 |



Avison
www.avision.com

